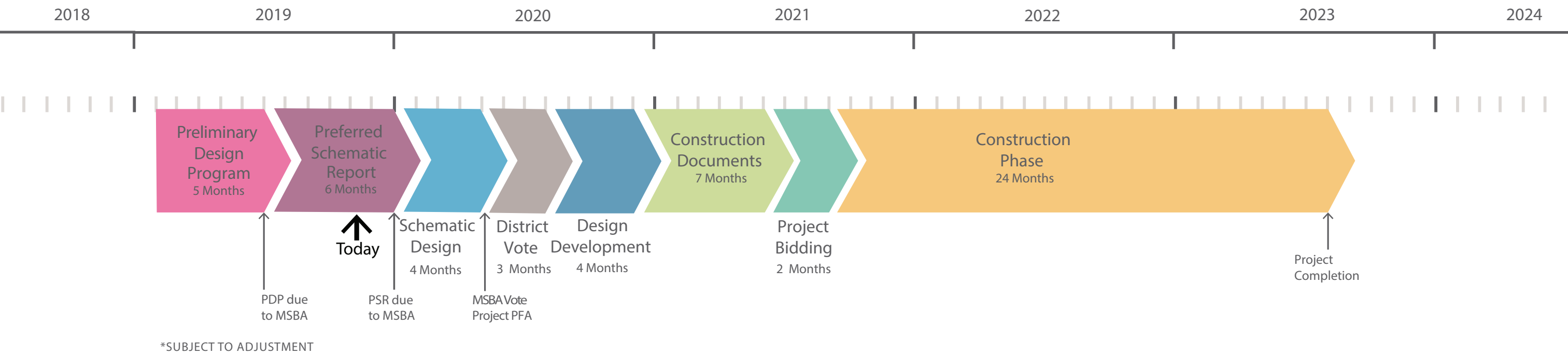


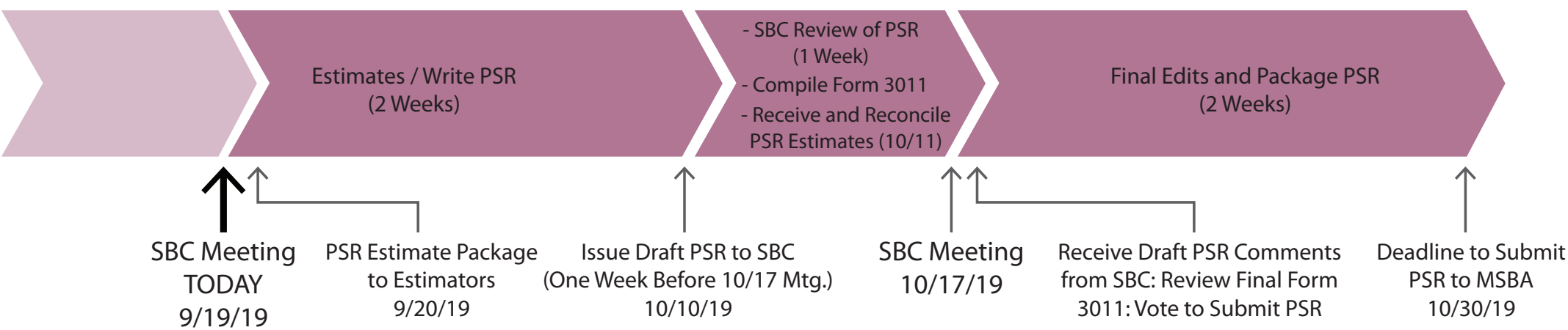
PROJECT TIMELINE

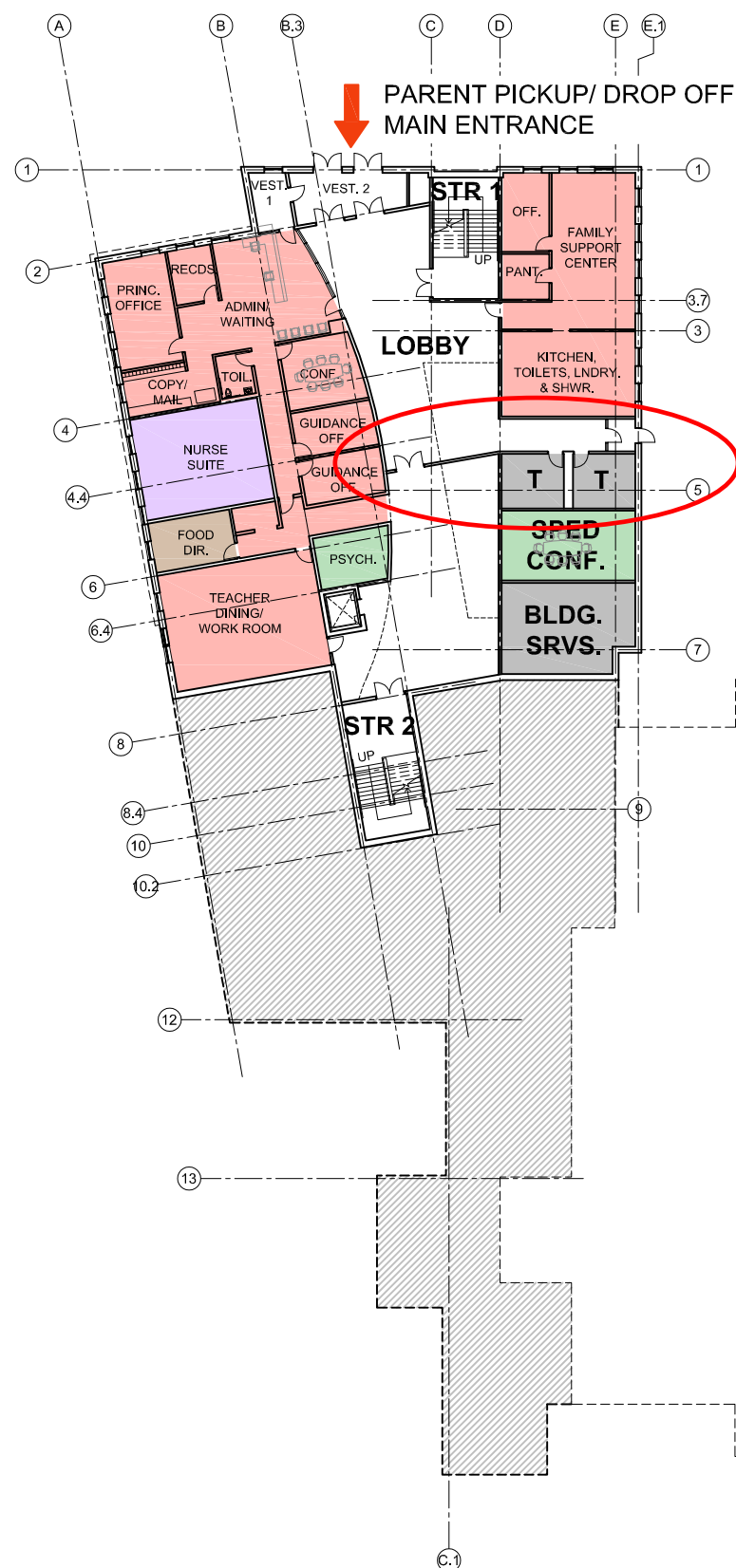
Overall Project Timeline



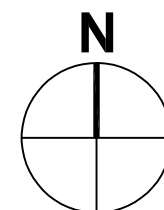
Current Phase: Preferred Schematic Report (Enlarged)

Milestones and Key Dates for the Remainder of this Phase:





GROUND FLOOR
SCALE: 1"=40'

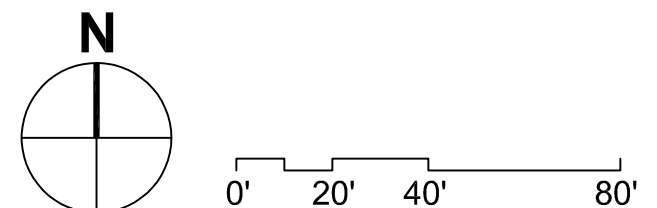


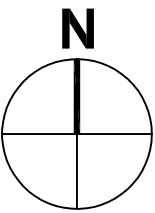
0' 20' 40' 80'

- ADMINISTRATION
- ART & MUSIC
- CAFETERIA & KITCHEN
- PK / K CLASSROOMS
- 1st - 6th GRADE CLASSROOMS
- GYMNASIUM / LOCKER ROOMS / PE STORAGE / PE OFFICE
- LIBRARY / MEDIA CENTER
- NURSE
- SPED
- MECHANICAL / CUSTODIAL / BATHROOMS
- ADDITIONAL SPACE



MIDDLE FLOOR
SCALE: 1"=40'



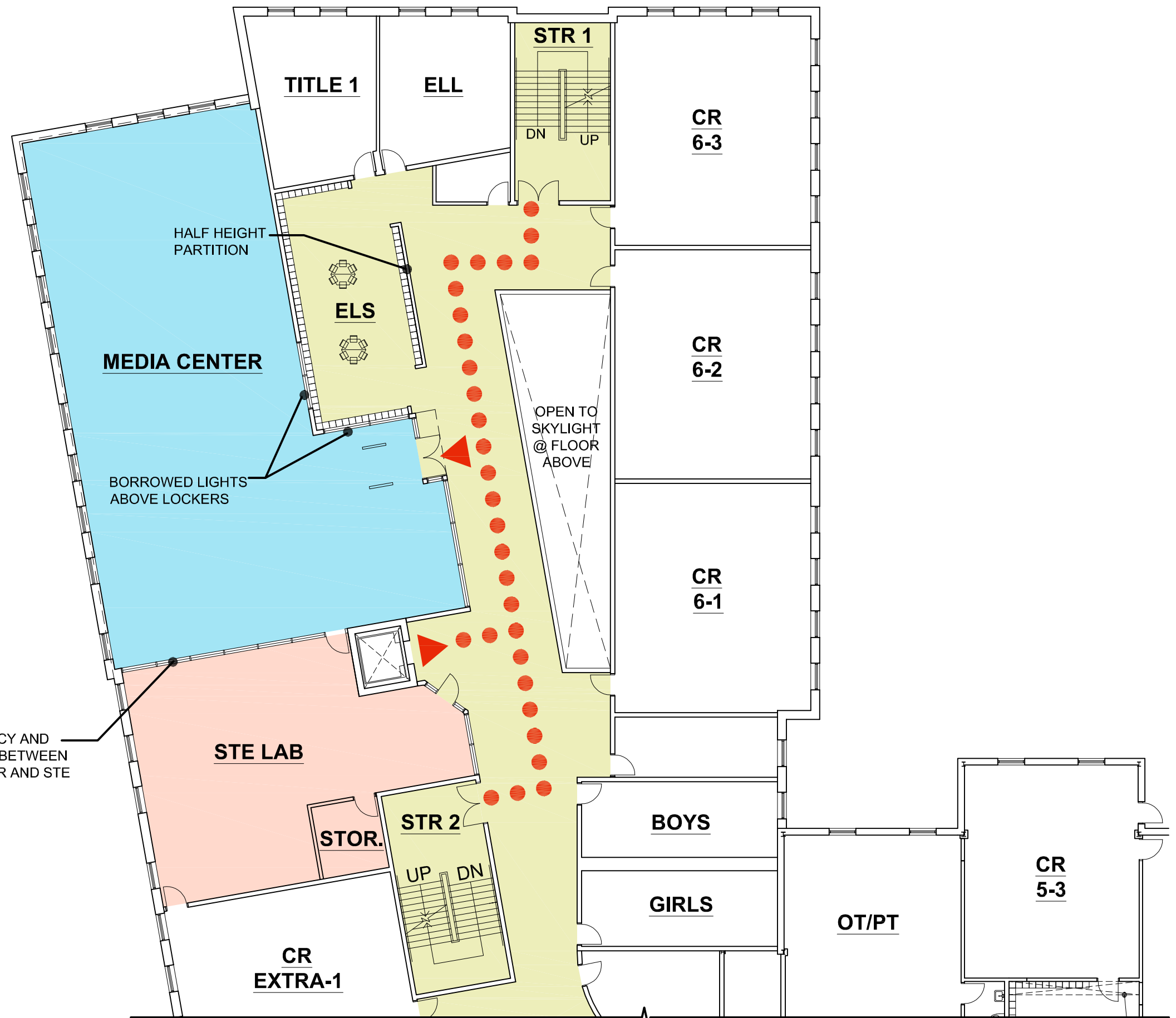


ENLARGED MEDIA CENTER PLAN
SCALE: 1/16"=1'-0"

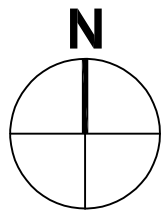
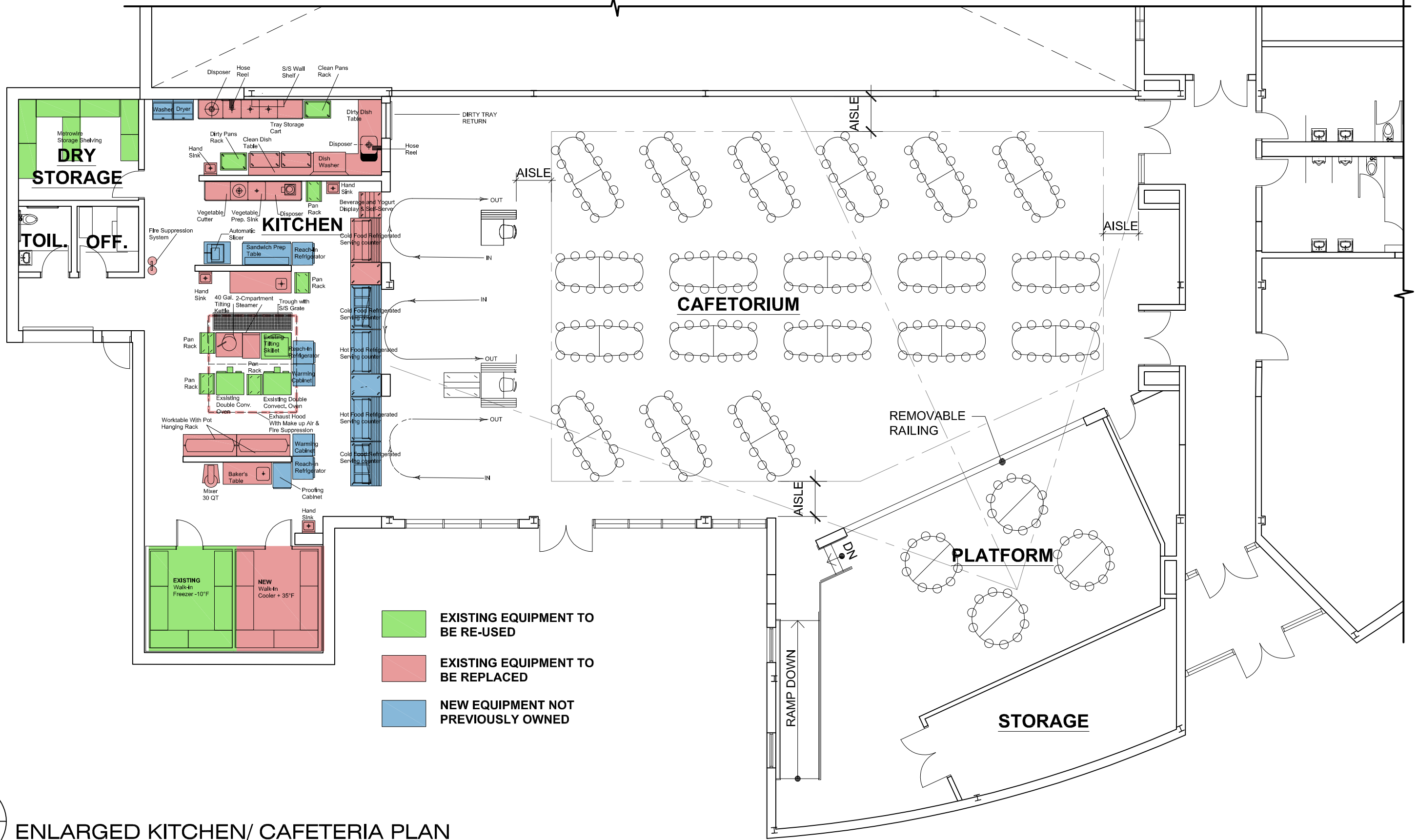


Raymond Design
Associates, Inc.
Architects & Planners
60 Ledgewood Place
Rockland, MA 02370

TRANSPARENCY AND
CONNECTION BETWEEN
MEDIA CENTER AND STE
LAB







ENLARGED KITCHEN/ CAFETERIA PLAN

SCALE: 3/32"=1'-0"

0' 4' 8' 16'

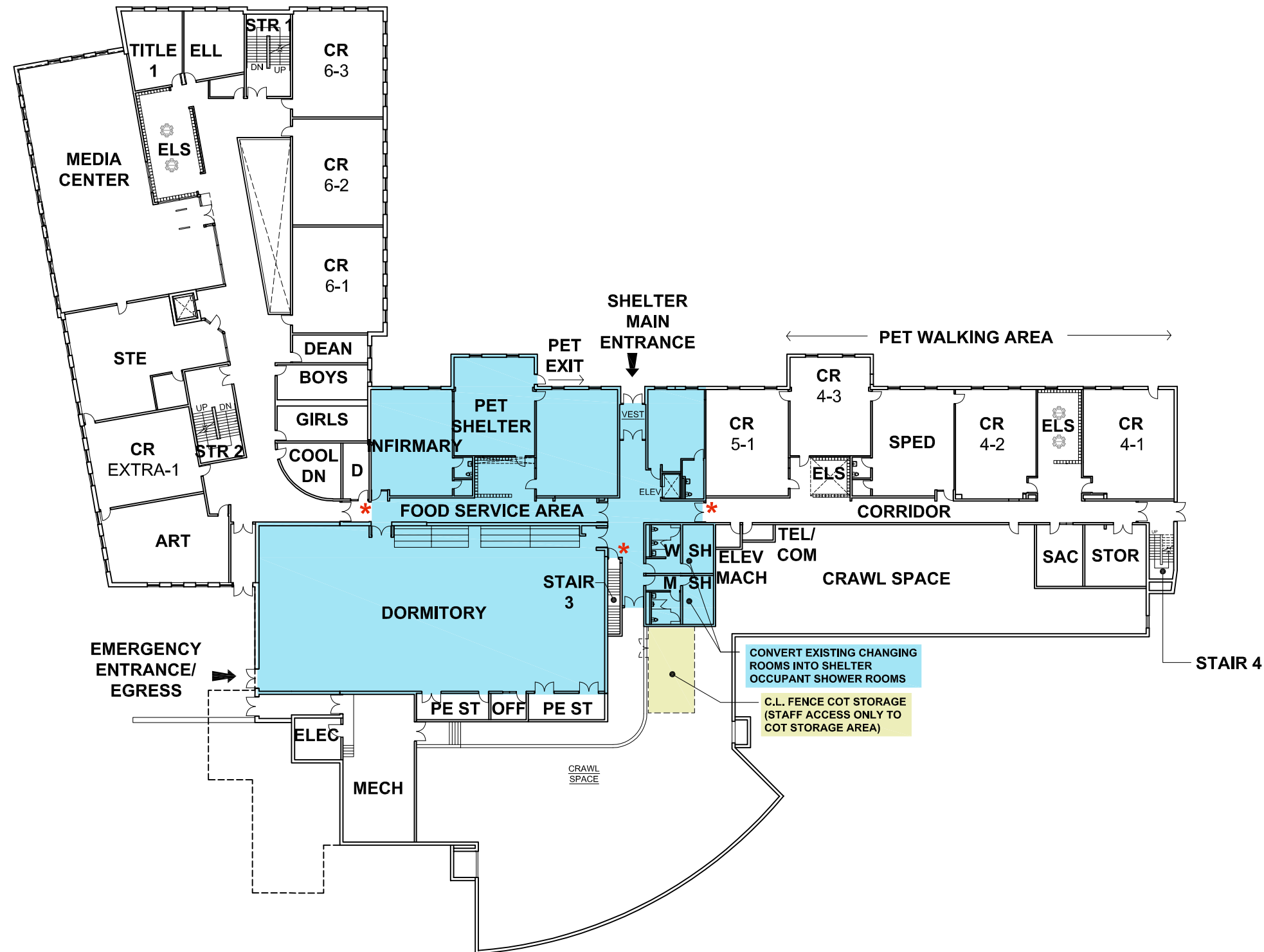


**Raymond Design
Associates, Inc.**
Architects & Planners
60 Ledgewood Place
Rockland, MA 02370

**FISHER HILL SCHOOL
PK-6 ADDITION / RENOVATION**

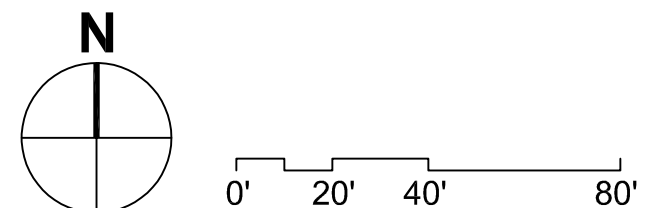
September 19, 2019

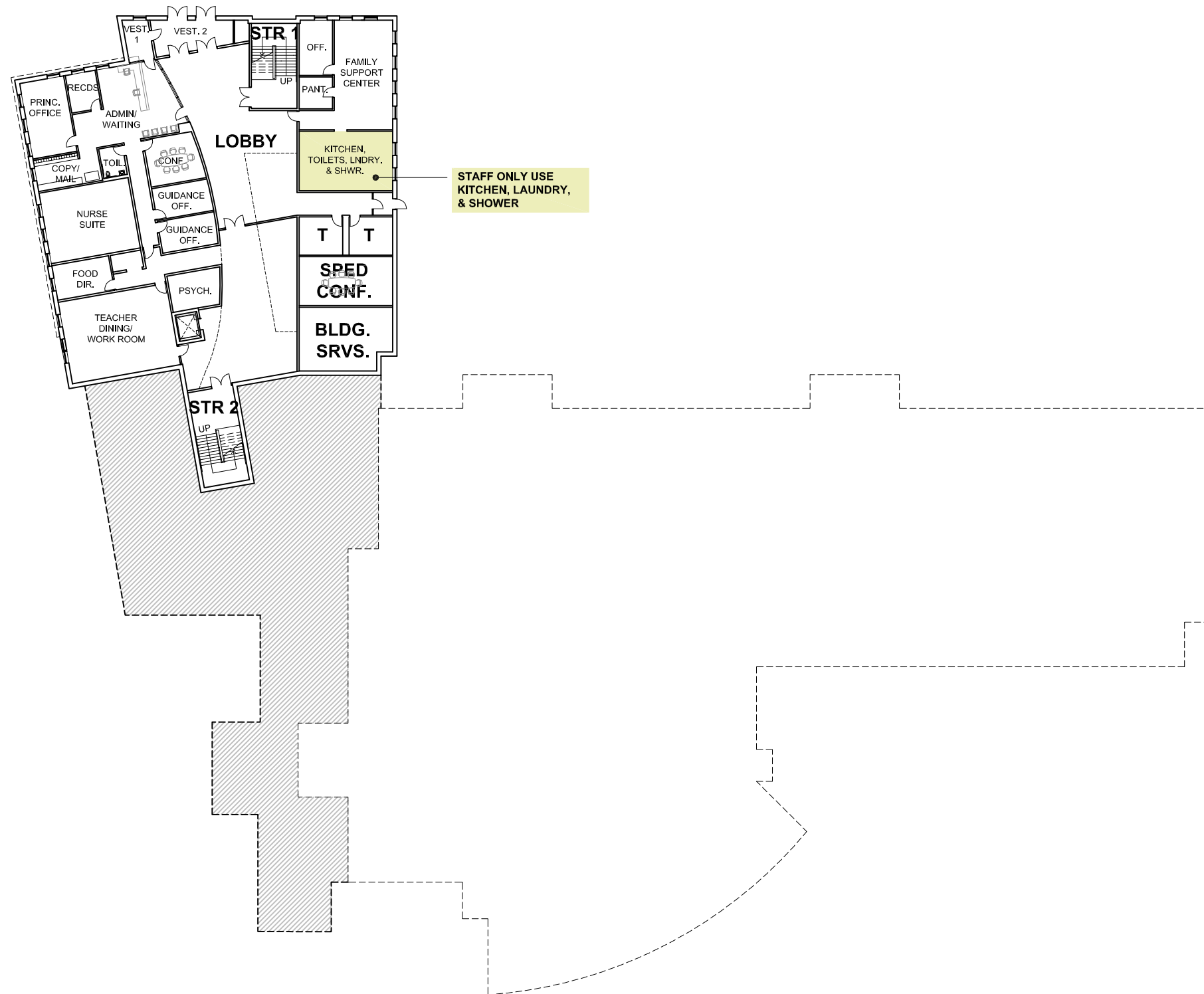
**OPTION
K.1**



- SHELTER OCCUPANT ACCESS
- STAFF ACCESS
- * LOCKABLE ACCESS DOOR

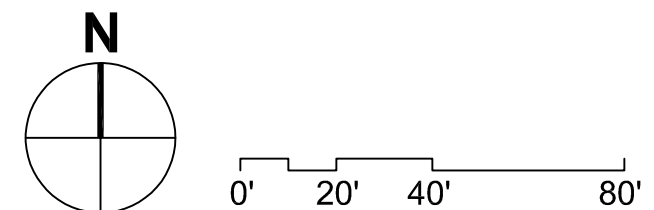
POSSIBLE EMERGENCY SHELTER USAGE
MIDDLE FLOOR
 SCALE: 1"=40'





- SHELTER OCCUPANT ACCESS
- STAFF ACCESS
- LOCKABLE ACCESS DOOR

POSSIBLE EMERGENCY SHELTER USAGE
GROUND FLOOR
 SCALE: 1"=40'

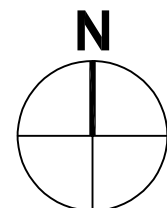




POSSIBLE EMERGENCY SHELTER USAGE

UPPER FLOOR

SCALE: 1"=40'



0' 20' 40' 80'



